

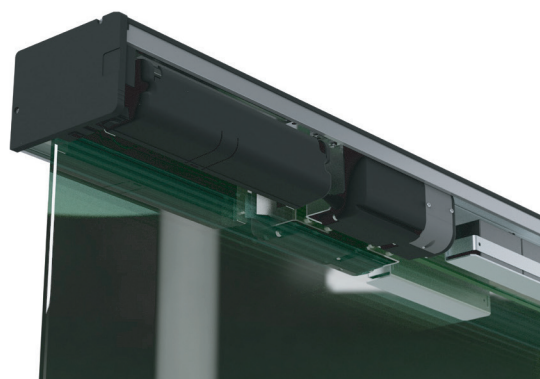
## » WIND 200 AUTOMATIC DOOR

The Wind 200 Automatic Door is an innovation that will change pedestrian access control system in your business, malls, stores, offices, and commercial establishments.

With cutting-edge features and a modern design, this solution provides practicality and security, and an experience of quality and comfort for users.

To make this quality equipment part of your enterprise, call PPA today and learn more details.

Check out below more features of this release!



### » TECHNICAL SPECIFICATIONS

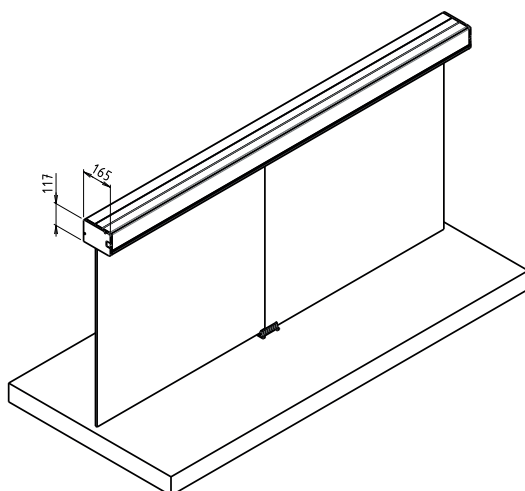
- 100% national product.
- Battery support.
- Ideal for doors up to 200 kg (100 kg per leaf or 01 leaf up to 200 kg).
- Stainless steel sliding track.
- Double pulley transport carts.
- Continuous cycles
- Smooth start and stop.
- On and off button.
- External access to selector/prog.
- LED operation status indicator.
- Available in white, black, and in natural aluminum.
- Available in the 24V Technology, with the Logic Door control unit.

**DOOR OPERATORS**

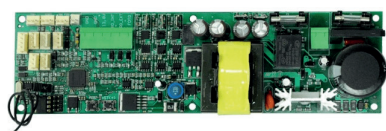
**WIND 200 AUTOMATIC DOOR**

<b>OPENING SPEED (ADJUSTABLE)</b>	50 cm/s (1 leaf) 1 m/s (2 leaves)
<b>CYCLES</b>	HEAVY DUTY
<b>APPLICATION</b>	Doors with 1 or 2-tempered glass leaves (10mm)   Door with frame
<b>MAXIMU LOAD (1 MOTOREDUCER)</b>	1 leaf - 200 kg   2 leaves - 10 0kg each (200 kg total)
<b>MODELS</b>	Glass door   Door with frame
<b>INSTALLATION</b>	Directly on the wall, beam or slab
<b>TRACKS IN SIZES</b>	2.00 m   2.50 m   3.00 m   3.50 m   4.00 m   4.50 m   5.00 m   5.50 m   6.00 m

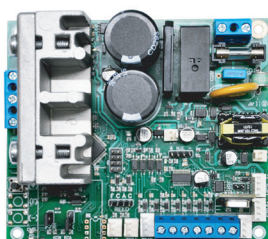
» **TECHNICAL DRAWING**



» **RELATED PRODUCTS**



LOGIC DOOR CONTROL BOARD



FULL RANGE CONTROL BOARD



FUNCTION SELECTOR